

Faith Pupella

Summer/Fall 2025

Issue 01

Middle of

A photograph of four young women standing in a lush green field, facing away from the camera and looking upwards with their arms raised. They are dressed in casual summer attire. In the background, there is a large tree, a stone wall, and a house with a porch. The image is framed by a light beige border.

Nowhere

A photograph of tall, dry, golden-brown grass, likely from a field or meadow, filling the bottom portion of the page.



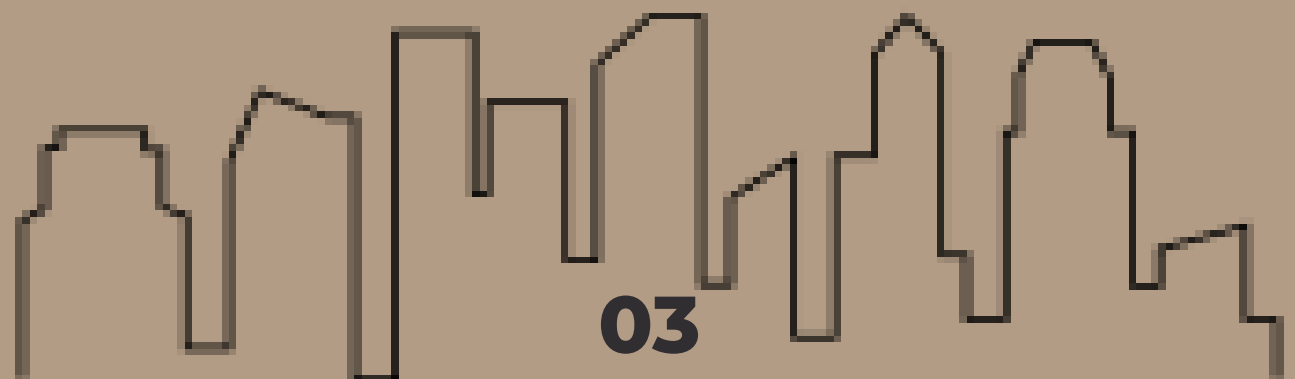
The humblest tasks get beautified if loving hands do them

- Louisa May Alcott

Table of Contents

02

Designer Profile	page 04
Introduction	page 06
Fabric and Color	page 7&8
Process and Techniques	page 9&10
Design Sketches	page 12
Collection Photos	page 13-25
Acknowledgements	page 26



Faith Pupella

faithpp2003@gmail.com

Designer Profile



Raised in a small town in West Texas, Faith Pupella knew she wanted to one day immerse herself in the world of fashion. By the time Faith was 8 years old she began using her sister as her mannequin and would staple and glue different scraps of fabrics together. Once she got into high school she would sketch on notebook paper all daylong, filling the pages with anything her mind could create. She couldn't wait to step out into her collegiate career and learn as much as she could about fashion design. She learned quickly that her personal style evolved around timelessness and femininity. Everything she made was something that she would confidently wear herself.

For her senior collection, Middle of Nowhere, she drew inspiration from her life, growing up in a western town and then moving into the bustling city. Faith found it difficult to figure out her personal style and merge her western culture with city sophistication. She decided to create a collection where she felt like others could wear her pieces in country towns and the busy city. Her collection includes multiple pieces that can be worn multiple different ways.



Introduction



When moving from West Texas to the bustling metropolitan life, I found it really hard to change the style that I grew up around. There wasn't really an easy way for me to intertwine the fashions of the country and the city. This inspired me to create a collection that combined two very different lives to make one I am proud of and would love to have seen back then. I want to use a combination of seemingly opposite fabrics and textures to create cohesive looks that match the merging of the city and the West. My collection aims to pinpoint young adult women who want to find their most personal and unique styles. I want versatility to show through in my pieces. I want to showcase what I have learned and create looks I'm proud of that still convey my message and combine each identity in their own ways. I want ruggedness and sophistication to collide into a creative and collaborative mix.

Fabric



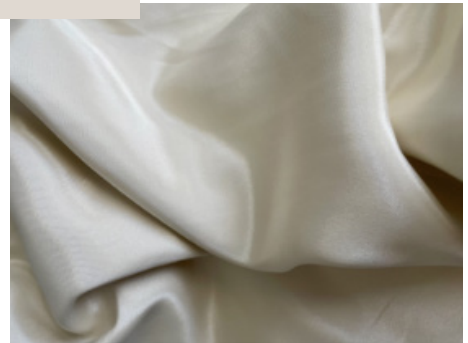
100% Cotton



92% Polyester
8% Spandex



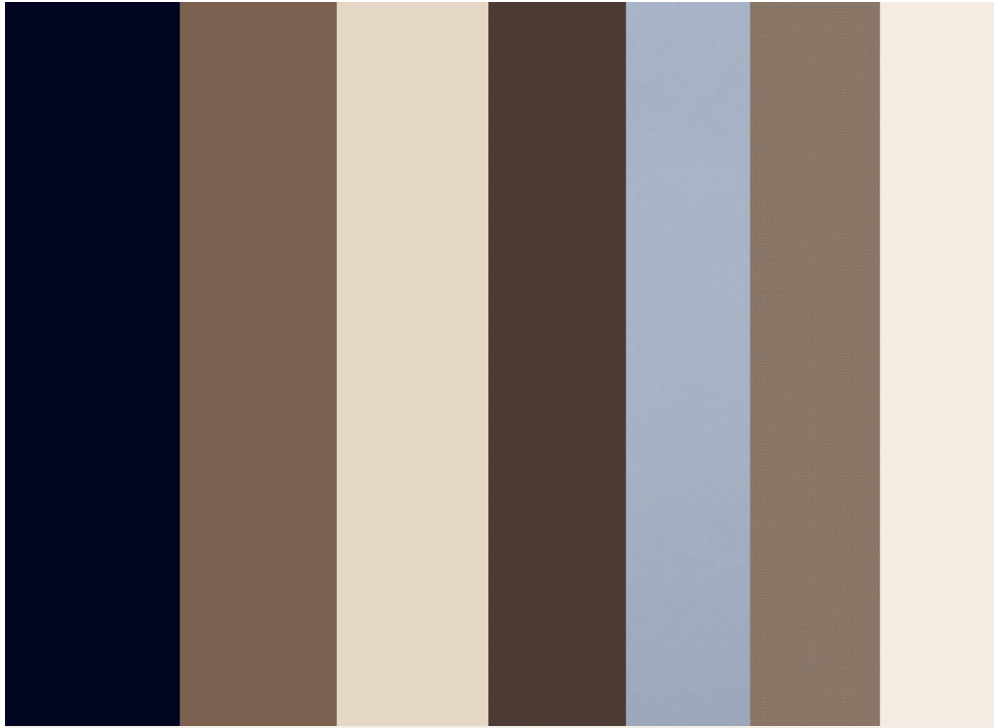
75% Cotton
23% Polyester
2% Elastane



100% Polyester



Color



I knew I wanted to use classic western-style fabrics, such as suede and denim in this collection, while also adding something in with a bit more elegance and delicacy. I thought satin was the perfect choice. The satin helps soften the heaviness of the other two contrasting fabrics and brings in the city sophistication I was looking for. I custom designed my satin cow print fabric that was used to create my satin, maxi skirt. I loved the idea of having such a bold print be put on a more elegant fabric than what may have been expected. My fabrics really helped pull this collection together and I love how many different types we were able to use, yet keep the theme cohesive.





Clo3d was what really started the patternmaking of this collection. However I slowly started integrating the rub-off technique into my patterns so I could get my garments as close to the models comfortable size as possible. We integrated distressed fabrics for a rugged look, as well as gold grommets laced together with delicate string and amber colored beads. I wanted even the small elements to play into the idea of the rough west and sleek charm of the city.

Process & Technique

Final Design Lineup Flats & Illustrations



MIDDLE OF



NOWHERE

This bold, Western-inspired ensemble combines playful Americana with a modern twist. The hand-dyed denim vest features oversized star appliqués and a front-tie closure, offering a flirty, laid-back edge. Paired with a silky, high-slit skirt in a custom, bold cow-print pattern, the look plays with texture and contrast. This outfit celebrates southern charm while embracing youthful confidence and individuality that we can take with us to the city. This look can be worn together, as designed, or seperated for even more useful wear.

Lookbook





15



Look Two



This tiered, ruffle mini dress radiates charm with a young, spirited silhouette. Crafted in rich denim and soft ivory satin, the alternating layers create bold visual contrast while adding volume and movement. The deep V-neckline balances the sweet ruffled hem. It's a fun, feminine piece that blends classic textures with contemporary flair—perfect for dressing up or down, in the country or on the metropolitan streets.



Look Rooted in retro charm and rich texture, this coordinated set is a confident statement. The double, two-tone suede fabric features subtle embossed detailing, adding dimension to the warm, earthy tone. The cropped button-down top plays with proportion through a wide neckline and structured shoulders, while the matching flared pants are finished with dramatic ruffled hems for a playful, western-inspired twist. This look effortlessly blends comfort with character, celebrating softness and strength in equal measure.



Look Four

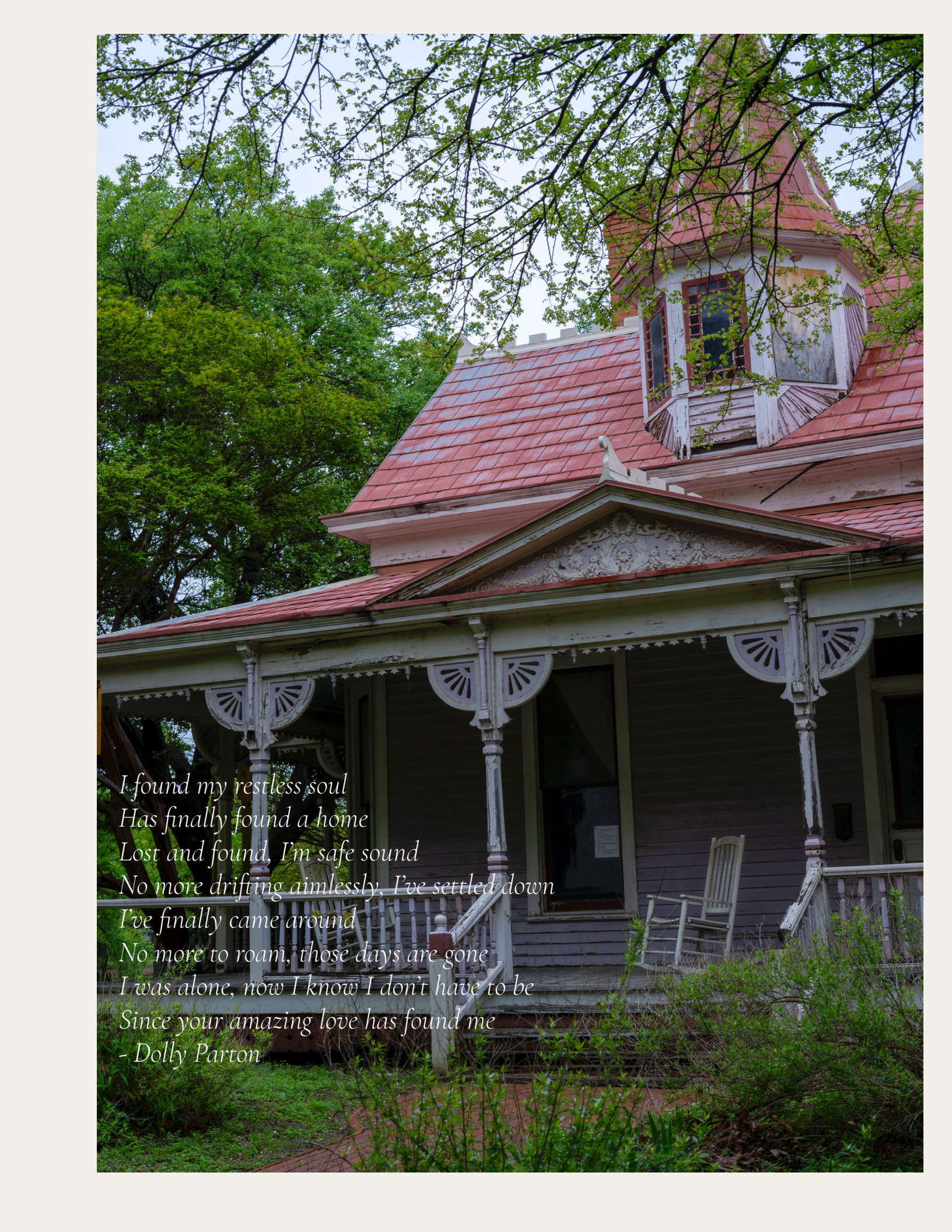


Ingrained in Southern beauty with a dash of glamour, this look pairs a ivory satin, asymmetrical halter top with a denim mini skirt boldly decorated with oversized white star appliques. The beaded halter string adds playful texture, and color while helping to ground the outfit in vintage Americana. Powerful, cheeky, and unapologetically fun, this ensemble celebrates the spirit of the modern woman, in the country or the city.







A photograph of a Victorian-style house with a red-tiled roof and a porch, partially obscured by trees. The house has a prominent front porch with ornate white railings and decorative brackets. A rocking chair is visible on the porch. The house is surrounded by lush green trees and foliage.

*I found my restless soul
Has finally found a home
Lost and found, I'm safe sound
No more drifting aimlessly, I've settled down
I've finally came around
No more to roam, those days are gone
I was alone, now I know I don't have to be
Since your amazing love has found me
- Dolly Parton*





Acknowledgements

26

Models:

Michelle Oliver

Tia Pupella

Kendall Taylor

Jordan Mundhenk

Photography:

Faith Pupella

Professor:

Jeremy Bernardoni

Thank you from the bottom of my heart to everyone who has supported me on this journey and encouraged me to push through to the end. Your support meant the world to me!

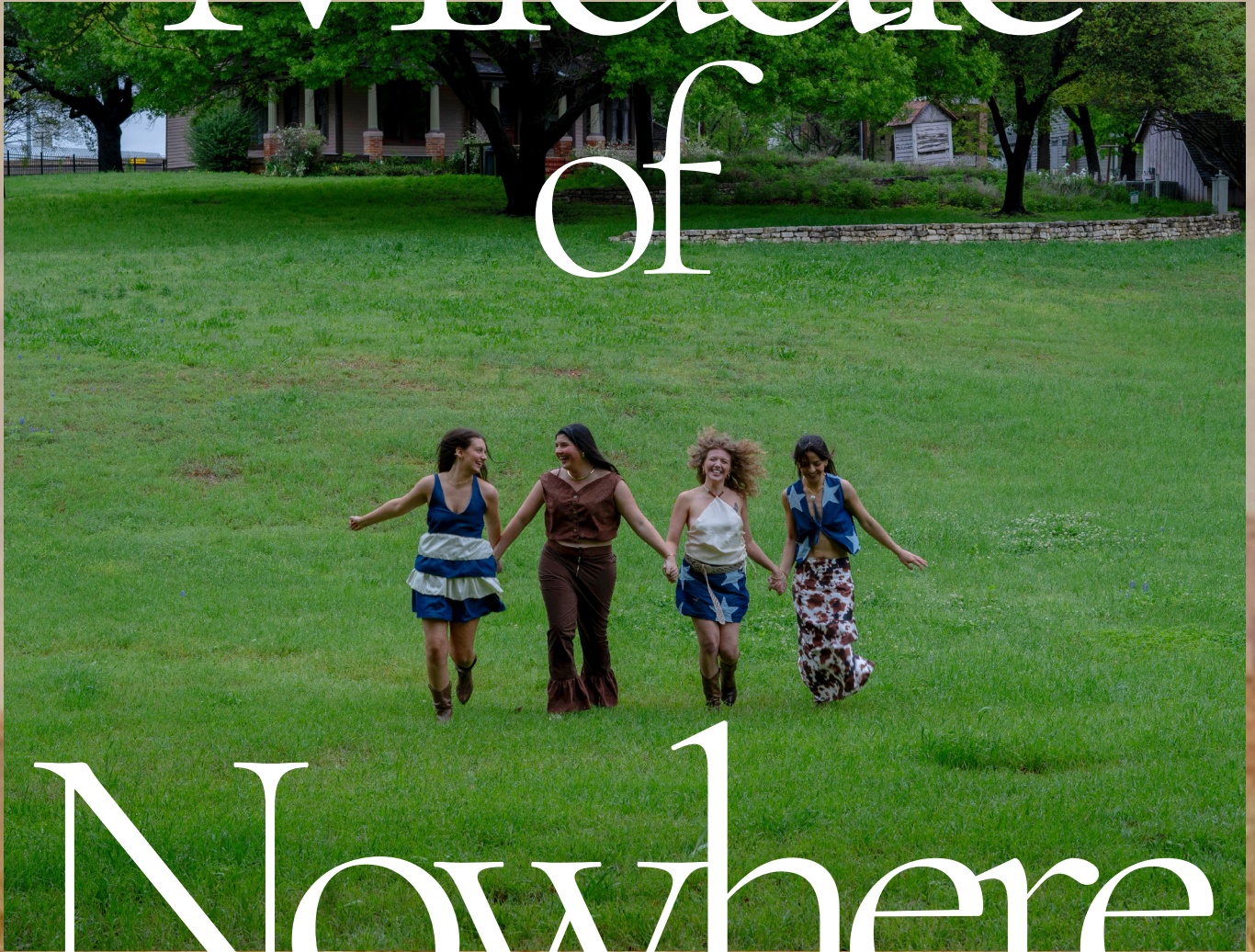


Last



Look

Middle
of



Nowhere

Faith Pupella